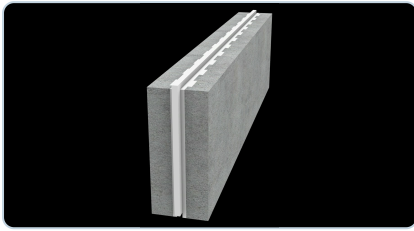


# LiteCore Building System

Agrément-certified lightweight infill walling · foamed-cement blocks with a CavityLite EPS core



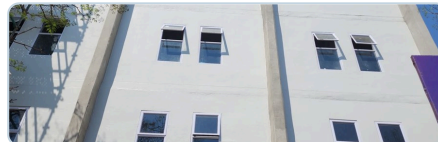
## Overview

The LiteCore Building System is Technopol's Agrément South Africa-certified walling system (certificate **2020/609**): factory-cast lightweight blocks of foamed cement with virgin or recycled EPS beads, laid as **non-load-bearing infill walls** inside a light-steel frame (SANS 517) or reinforced-concrete frame. External blocks carry a moulded 60 mm **CavityLite** EPS core between lightweight-concrete skins. The interlocking tongue-and-groove blocks are laid in stretcher bond with LiteCore Bond thin-bed mortar and finished with mesh-reinforced LiteCore Plast render — a complete certified wall delivering a whole-wall R-value of 2.30 m<sup>2</sup>K/W and 45 dB between-room sound insulation.

## Applications



Single-storey homes & cottages



Multi-storey RC-frame infill



Light-steel-frame & commercial infill

Certified occupancy classes: A3, A4, B2/B3, D2/D3, F1/F2, F3, G1, H2, H3, H4 — plus E1, E2 and other institutional (with internal wall 2). Multi-storey use is subject to an approved competent engineer.

## Benefits

- Certified whole-wall R-value of 2.30 m<sup>2</sup>K/W
- Certified 45 dB between-room sound insulation (DnT,w) — meets SANS 10218-1
- Certified for single- & multi-storey use, all SA regions
- Light hand-laid blocks — fast, accurate tongue-and-groove coursing
- Conventional trades — chased services, all roof types, standard finishes
- Foamed-cement block matrix cast with virgin or recycled EPS beads

## Specifications

Certification	Agrément South Africa certificate 2020/609 (amended March 2021)
Structural role	Non-load-bearing infill in a light-steel frame (SANS 517) or reinforced-concrete frame
Block format	1200 mm long × 340 mm high · interlocking tongue-and-groove, stretcher bond
Block thickness	External 150 mm (60 mm CavityLite EPS core + 45 mm lightweight-concrete skins) · internal 100 mm solid
Block density	400–450 kg/m <sup>3</sup> (certified nominal, foamed cement + EPS beads)
Thermal performance	Whole external wall total R-value 2.30 m <sup>2</sup> K/W (certified)
Acoustic performance	45 dB DnT,w between rooms (certified) · modelled R <sub>w</sub> 45–48 dB (Acusolv report G1476)
Jointing & finish	LiteCore Bond thin-bed mortar · LiteCore Plast render on fibreglass mesh (min 12 mm ext · 5 or 18 mm int)

**Compliance.** Certified as a complete walling system under **Agrément South Africa certificate 2020/609** (amended March 2021) — blocks, thin-bed mortar and mesh-reinforced render within an engineer-designed frame. The certificate classifies external walls as **non-combustible (type FRR) with a 120-minute fire-resistance rating** under deemed-to-satisfy rule TT2.1(a) of SANS 10400 — a certificate classification, not an independent fire test of the wall. Multi-storey use requires the certificate's cavity-break details and an approved competent engineer. Confirm current certificate status at [agrement.co.za](http://agrement.co.za) before specifying.

Request the Agrément certificate, block schedules & a project quote — [info@technopol.co.za](mailto:info@technopol.co.za) · +27 11 363 2780 · [technopol.co.za](http://technopol.co.za)