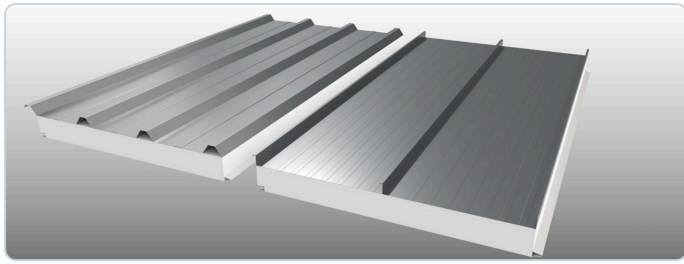


LiteSpan Insulated Panels

Factory-laminated insulated sandwich panels — roof, wall & ceiling systems in FR-EPS, StoneWool & PIR cores



Overview

LiteSpan is Technopol's factory-laminated insulated sandwich-panel family — an insulating core bonded between two coated-steel skins to give insulation, a weatherproof surface and a finished internal face in a single lift. Two roof profiles are made at 990 mm cover: **990 IBR**, with a wide-IBR top skin and exposed stitch-screw fixing, and **990 Standing Seam**, seamed on site over hidden galvanised clips. The range extends to tongue-and-groove **wall & ceiling panels**, single-skin **ceiling pans** and a non-combustible **StoneWool** range in Flat and Deep-Profiled-Roof formats — with cores in FRCel fire-retarded EPS (standard), StoneWool mineral fibre or Technopol PIR 32.

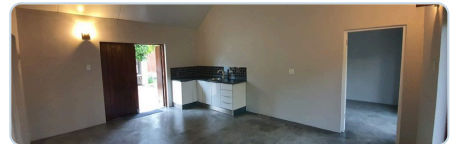
Applications



Insulated roofs — 990 IBR & Standing Seam



Walls & cladding — T&G panels



Ceilings, cold-store & StoneWool

Also: warehouses · agricultural & poultry · cold rooms · food processing, labs & GMP · hospitals & clinics · prefab / modular units.

Benefits

- Factory-laminated sandwich panel — insulation and weatherproof skin in one lift
- The roof panel is the finished ceiling — no separate lining or insulation
- Light and long-span at 990 mm cover — fewer purlins, faster to fix
- Choice of cores: FR-EPS, non-combustible StoneWool (A1) or PIR
- Chromadek coated-steel facings; Z / AZ / ZAM corrosion-resistant coatings
- Hidden-clip Standing Seam or exposed-fix IBR; factory-cut to length

Specifications

Roof profiles	990 IBR (wide-IBR skin, exposed stitch-screw fixing) & 990 Standing Seam (hidden 0.8 mm galvanised clips, seamed on site) — 990 mm cover
Roof core depths	75 / 100 / 125 / 150 mm
Roof installed R-value	2.3 / 3.0 / 3.7 / 4.4 m ² K/W (75 / 100 / 125 / 150 mm core)
Roof max free span	2.5 / 3.0 / 3.5 / 4.0 m at 1.6 kN/m ² — engineer to verify wind-uplift case
Wall / ceiling panels	Tongue-and-groove, 1145 mm cover (990 mm T&G variant available)
Single-skin ceiling pans	282 / 490 mm cover, lengths to 6000 mm
StoneWool range	Flat 1145 mm & DPR 990 mm (44 mm flute); 50 / 75 / 100 / 150 mm; U-value 0.70–0.23 W/m ² K
Panel cores	FRCel FR-EPS · StoneWool (EN 13162 mineral fibre, 120 kg/m ³ , A1) · Technopol PIR 32 ($\lambda \leq 0.023$ W/m·K)
Facings & colours	Chromadek / coated steel, Z / AZ / ZAM coatings; 0.3–0.58 mm (roof), ≥ 0.5 mm (StoneWool). Standard colour range; roof-panel underside white only

Fire & compliance. LiteSpan is built with a choice of cores. The standard **FRCel fire-retarded EPS** core holds a current **SANS 53501-1** reaction-to-fire classification of **Class B-s1,d0** (report Aug 2023) — a reaction-to-fire class, **not a fire-resistance (minutes) rating**. The **StoneWool** core is **Class A1** non-combustible mineral fibre (EN 13501-1). All EPS is combustible. FR-rated test reports for StoneWool wall / firewall systems are on file and available on request — confirm current validity before specifying a rated system; PIR panels carry no fire-resistance rating. Not an Agrément-certified line (certificate 2020/609 covers LiteCore only).

Request panel profiles, core options, the colour range & a project quote — info@technopol.co.za · +27 11 363 2780 · technopol.co.za