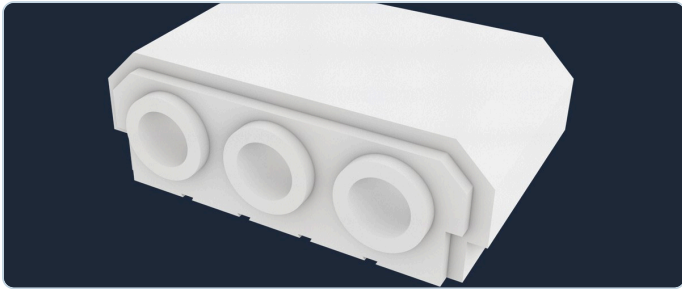


# Technoblock

## Moulded FR-EPS permanent shuttering for rib-and-block suspended concrete slabs



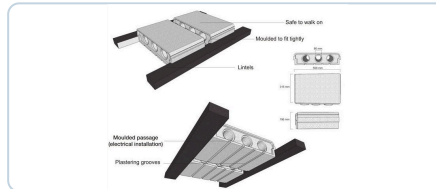
### Overview

Technoblock is Technopol's moulded flame-retardant (FR) EPS permanent-shuttering block for rib-and-block (beam-and-block) suspended concrete slabs. Blocks are laid between pre-cast concrete lintels in place of heavy cement "ash" blocks and the structural topping is cast over them — the EPS stays in the slab as lightweight void fill, thermal insulation and acoustic damping. Two moulded types are produced: the solid **#120** for balconies and low-bearing ground-floor slabs, and the 3-core **#190** for double-storey and constant-load slabs, where reinforcing rods pass through the cores. The block is **non-structural** — the concrete ribs and topping carry the load.

### Applications



#120 solid — balconies & low-bearing ground floors



#190 3-core — double-storey & constant-load slabs



Cut EPS void formers — engineer-specified slab systems

Also: biaxial (bubble-deck-style) slabs · TASS thermally-broken rib slabs · chamber fillers · cut void formers in graded densities 12SD–30DV.

### Benefits

- Far lighter than cement ash blocks — faster, easier handling
- Less load on foundations and walls; less concrete in the slab
- Built-in thermal insulation and acoustic damping
- Moulded top face safe to walk on during installation
- Electrical passage and plastering grooves moulded in
- Extenders and free end caps deepen the #190 slab

### Specifications

|                       |  |
|-----------------------|--|
| #120 Technoblock      | 550 × 320 × 120 mm — solid; balconies & low-bearing ground floors                                    |
| #190 Technoblock      | 550 × 320 × 190 mm — 3 longitudinal cores; end caps 6 free per 5 blocks                              |
| Typical slab detail   | Ribs at 660 mm centres (500 mm block face + 160 mm rib); 65 mm mesh-reinforced topping — 255 mm slab |
| Extenders (#190 only) | 1230 mm long, one covers 4 blocks; 60 / 80 / 90 / 175 / 260 mm thick                                 |
| Packaging             | 30 blocks per bundle   |
| Material              | Moulded flame-retardant (FR) EPS — non-structural permanent shuttering                               |
| Structural design     | Rib spacing, topping, reinforcement & spans by the project engineer                                  |

**Fire & compliance.** Moulded from flame-retardant (FR) EPS. The FR-EPS grade holds a current **SANS 53501-1** reaction-to-fire classification of **Class B-s1,d0** (report IT 23-08-00009) — a reaction-to-fire class, **not a fire-resistance (minutes) rating**, and none is claimed for the block itself; fire resistance of the finished floor is a property of the complete engineered slab, in which the EPS is fully encased in concrete. All EPS is combustible — keep blocks away from open flame before casting. Not an Agrément-certified line: certificate 2020/609 covers LiteCore only.

Request block schedules, extenders & a project quote — [info@technopol.co.za](mailto:info@technopol.co.za) · +27 11 363 2780 · [technopol.co.za](http://technopol.co.za)